

FANUC Robot P-1000iA



Features

Design

- Unique Painting Robot With Seven Integrated Axes
- Optimally Position Arm In Interior & Exterior Paint Programs
- Inverted Pedestal Installation Maximizing Work Envelop
- Balanced Arm Length Provides Excellent Near & Far Reach
- Payload Supports A Range Of Rotary Atomizers & Spray Guns

Booth

- Minimizes Booth Size By Optimizing Robot Density
- In-Line Arms Maintain Process Symmetry Across The Booth

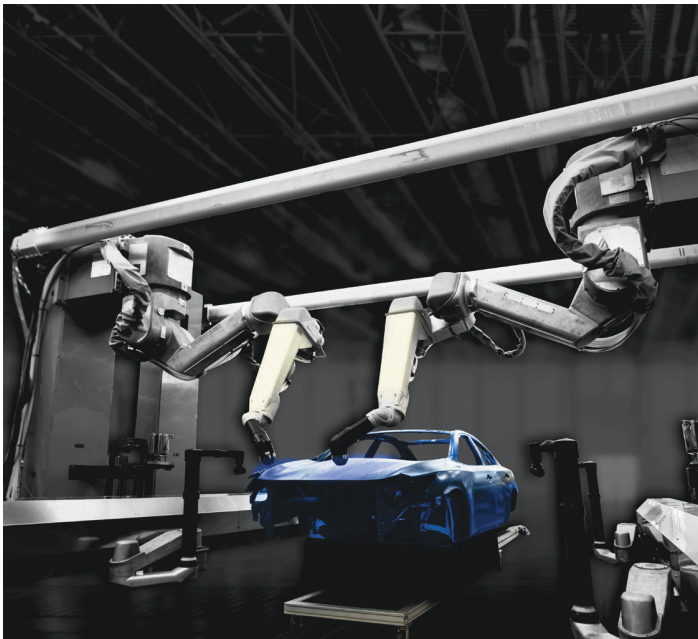
Application

- Easy Access To All Critical Process Components
- Maximized Performance With In Arm Process Components
- Integrated Fluid Delivery Systems With FANUC Servo Motors
- Direct Charge Waterborne And 1k & 2k Solventborne Systems
- 140° Hollow Wrist Optimized For Demanding Paint Processes

Controller

- A Compact And Stackable R-30iB Paint Controller
- Single Arm And Dual Arm Controller Support
- Supported By The iPendant Color Graphical Teach Pendant
- Integrated Support Of Hood, Deck And Door Opener Controls
- Supports All Major Network Communications Protocols

Interior Application



P-1000iA Interior Door Zone With P-20iA Openers

Software Features

Paint Application

- Industry's Most Powerful & Easy-To-Use Interface – PaintTool
- Integrated Diagnostic Monitoring And Reporting Of Process Parameters Provides Real-Time Strip Chart Capability

Motion Enhancement

- Software Functionality To Simplify Elbow Position Control
- Dual Check Safety Enables Smaller Booths
- Collision Guard Minimizes Application Equipment Damage

Options

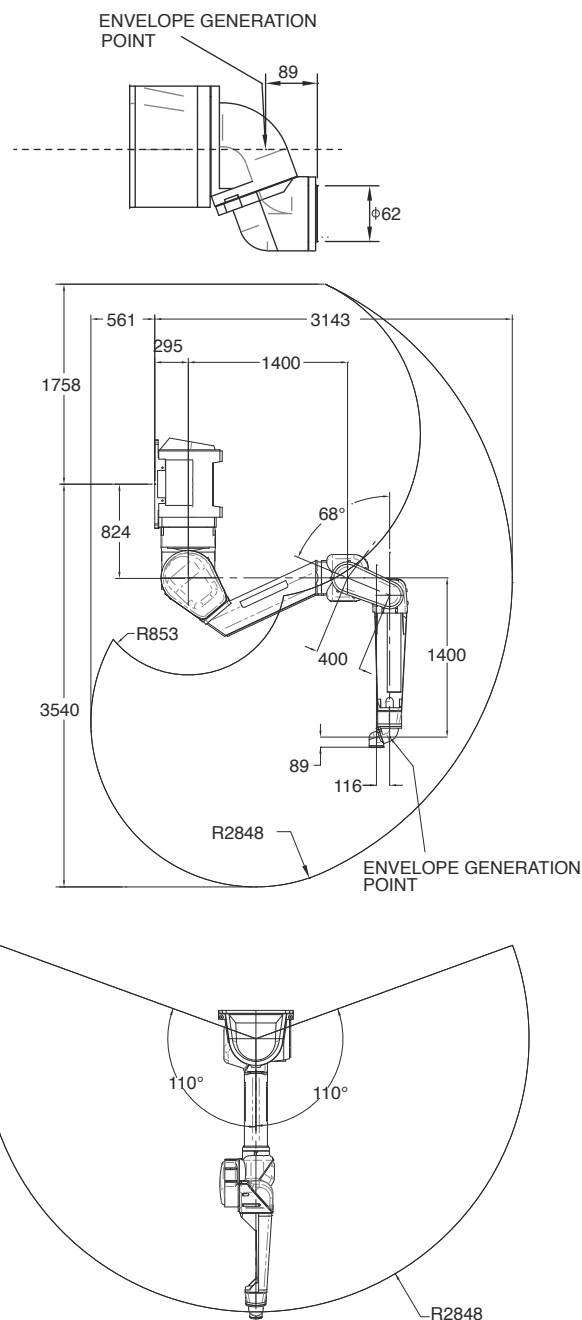
- Mechanical Unit & Paint Process Equipment Are Monitored And Protected By FANUC's Zero Down Time Package
- Pressure vs. Flow Monitoring Software Detects Fluid Delivery System Problems In Real-Time
- ROBOGUIDE PaintPRO Offline 3D Programming

FANUC Robot P-1000iA

P-1000iA SPECIFICATIONS:

Item		Specification		
Controlled Axes		7 Axes		
Motion Range * & Standard Maximum Motion Speed	Reach	2848mm		
	J1 Axis	±110°	125° / sec	
	J2 Axis	+85° / -65°	125° / sec	
	J3 Axis	+120° / -120°	120° / sec	
	J4 Axis	+90° / -70°	120° / sec	
	J5 Axis	± 720°	200° / sec	
	J6 Axis	± 720°	200° / sec	
J7 Axis	± 720°	200° / sec		
Maximum Load Capacity		Maximum Tip Speed	1500mm/sec	1200mm/sec
		At Wrist	10kg	15kg
		On J2 Arm	15kg	
		On J4 Arm	25kg	
Repeatability		± 0.5mm		
Drive Method		Electric Servo Driven AC Servo Motor		
Feedback Method		Absolute Pulse Encoders		
Axis Control		Digital-Servo Controlled Path Control Joint, Linear, And Circular Motion		
Mechanical Brakes		All Axes		
Weight		Mechanical Unit : 700kG		
Installation		Invert Mount		
Temperature Conditions		0° - 45°C		
Humidity Conditions		Normal	< 75%	
		Short Term	< 95% (< 1 month)	
		Condensation	None Permissible	
Vibration		< 0.5 m/sec ² (G)		
Hazardous Location Certifications		FMUC Class I, II, III, Div I Group C, D, E, F, G, T4 45°C Ambient		
		ATEX CE II 2 G c Ex ib px IIB T4 Ta = 0°C to +45°C		
		ATEX CE II 2 D c Ex pD 21 T135° Ta = 0°C to +45°C		

* Work Envelope Generated With Identified Wrist Point
Reach Measured To Faceplate Is 89mm Larger



北京哈德曼自动化设备有限公司
BEIJING HARDMAN AUTOMATION EQUIPMENT CO.,LTD

北京公司:北京亦庄开发区经海四路11号

天津公司:天津武清区庆龄大陆15号

电话: 022-82109587

邮箱: hdm-sales@bj-hardman.com

网址: <http://www.bj-hardman.com/>

